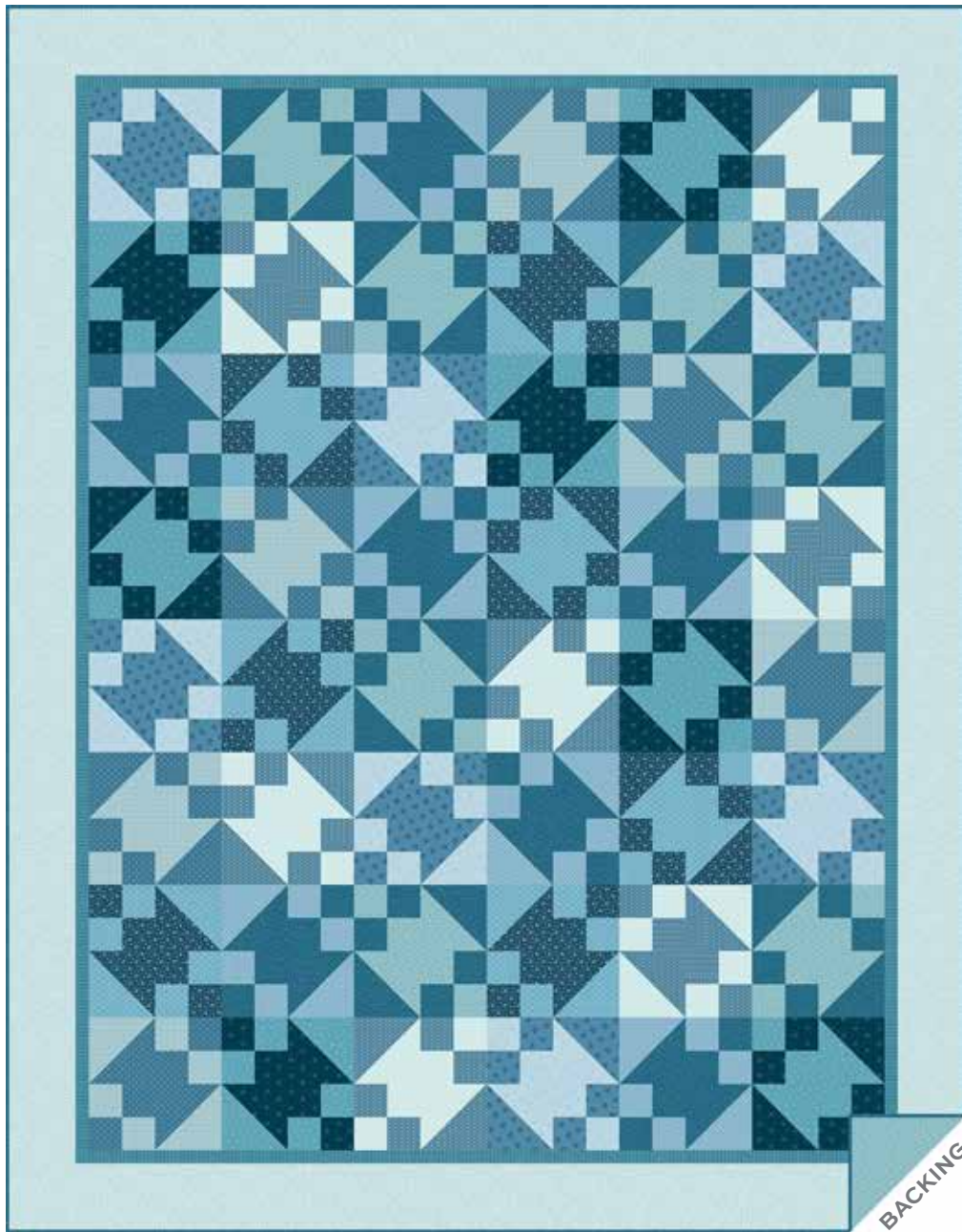


Wellspring

ANDOVER FABRICS

a
100
years



Wellspring Quilt designed by: **Janet Houts** • Quilt Size: **72" x 92"**
Skill Level: **Beginner**

andover

•
•
• makower uk
•

Free Pattern Download Available

1384 Broadway New York, NY 10018
Tel. (800) 223-5678 • andoverfabrics.com

3/15/22

Wellspring Quilt

Introducing Andover Fabrics new collection: **FOUNTAIN BLUE** by Andover Fabrics

Quilt designed by Janet Houts



Quilt finishes 72" x 92"
12 Big Blocks: 20" x 20"

Looking for the block in this bed-size quilt will be fun for viewers. The arrangement of the light and dark blue prints is somewhat surprising. Checkerboards and diagonal lines of color add to the interest. Easy enough for a beginning sewer.

Cutting Directions

Note: Read assembly directions before cutting patches. All measurements are cut sizes and include 1/4" seam allowances. Borders are cut the exact lengths required plus 1/4" seam allowances. WOF designates the width of fabric from selvedge to selvedge (approximately 43" wide).

Cutting for ONE block:

Dk. Blue

Cut (4) squares 3"
Cut (1) square 5 7/8", cut in half diagonally to make 2 half-square triangles

Lt. Blue

Cut (4) squares 3"
Cut (1) square 5 7/8", cut in half diagonally to make 2 half-square triangles

Cutting for Quilt

Fabric A

Cut (2) borders 5 1/2" x 82 1/2" cut lengthwise
Cut (2) borders 5 1/2" x 72 1/2"

Fabric B

From each of 6 prints:
Cut (8) strips 1 1/2" x WOF, pieced to make the following:
(2) borders 1 1/2" x 80 1/2"
(2) borders 1 1/2" x 62 1/2"

Fabric Requirements

		Yardage	Fabric
Fabric A	border	2 1/2 yards	316-B
Fabric B	border	1/2 yard	319-B
7 Dk. Blue	blocks	1/2 yard each	
	307-B	308-B	309-B
	314-B	315-B	317-B
7 Lt. Blue	blocks	1/2 yard each	
	311-B	312-B	313-B
	320-B	321-B	322-B
Binding		3/4 yard	310-B
Backing		5 3/4 yards	313-B

7 Dk. Blue From each of 6 prints:
Cut (7) squares 5 7/8", cut in half diagonally to make 14 half-square triangles
Cut (28) squares 3"
From 1 dark blue:
Cut (6) squares 5 7/8", cut in half diagonally
Cut (24) squares 3"

7 Lt. Blue From each of 6 prints:
Cut (7) squares 5 7/8", cut in half diagonally to make 14 half-square triangles
Cut (28) squares 3"
From 1 light blue:
Cut (6) squares 5 7/8", cut in half diagonally
Cut (24) squares 3"

Binding

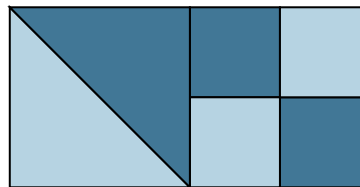
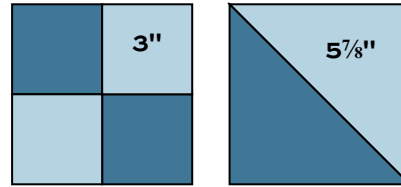
Cut (9) strips 2 1/2" x WOF for binding

Backing

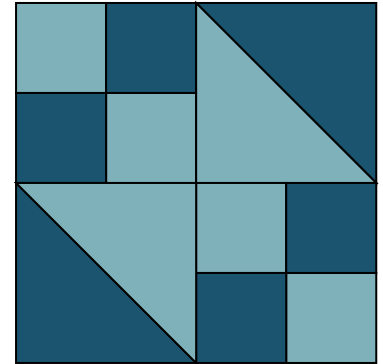
Cut (2) panels 40" x 100", pieced to fit quilt top with overlap on all sides

Making the Quilt

1. The blocks are made in 7 combinations of one dark and one light print. Referring to the Block Y diagram, arrange the 3" squares and the half-square triangles to make 4 units. Each unit should measure 5½" square. If they do not, adjust your stitching and/or pressing techniques. Join the 4 units to make a block that should measure 10½" square from edge to edge. Make a total of 24 Y Blocks. Likewise, join the patches to make 24 Z Blocks, noting the differences in color placement of the light and dark fabrics.



Block Y – Make 24



Block Z – Make 24

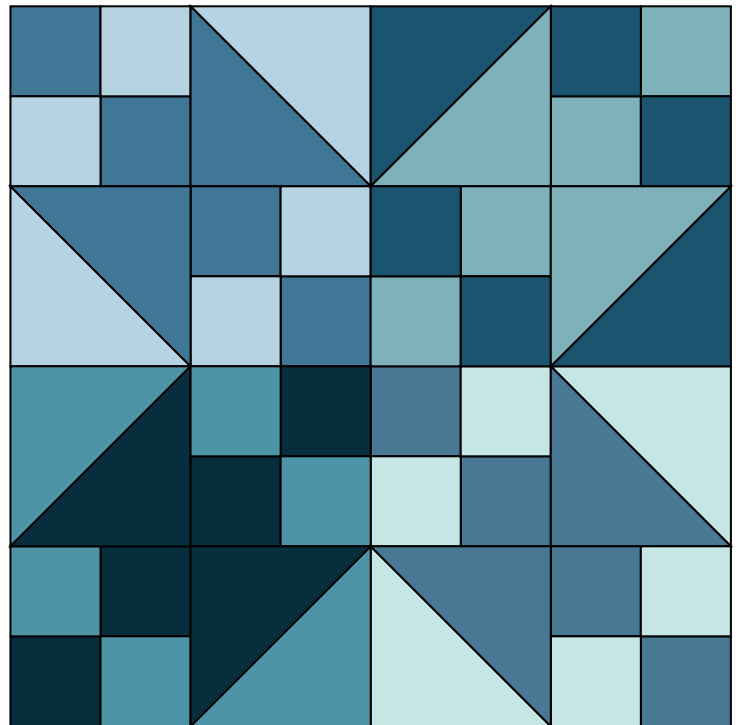
2. Note that 4 blocks are rotated as shown to make each Big Block. Feel free to combine the Y and Z Blocks as you wish, being careful that same fabrics do not touch. Make 12 Big Blocks.

3. Referring to the Quilt Diagram, arrange the 12 Big Blocks in 4 rows. Once you are satisfied with the arrangement, join the blocks in rows, and then join the rows.

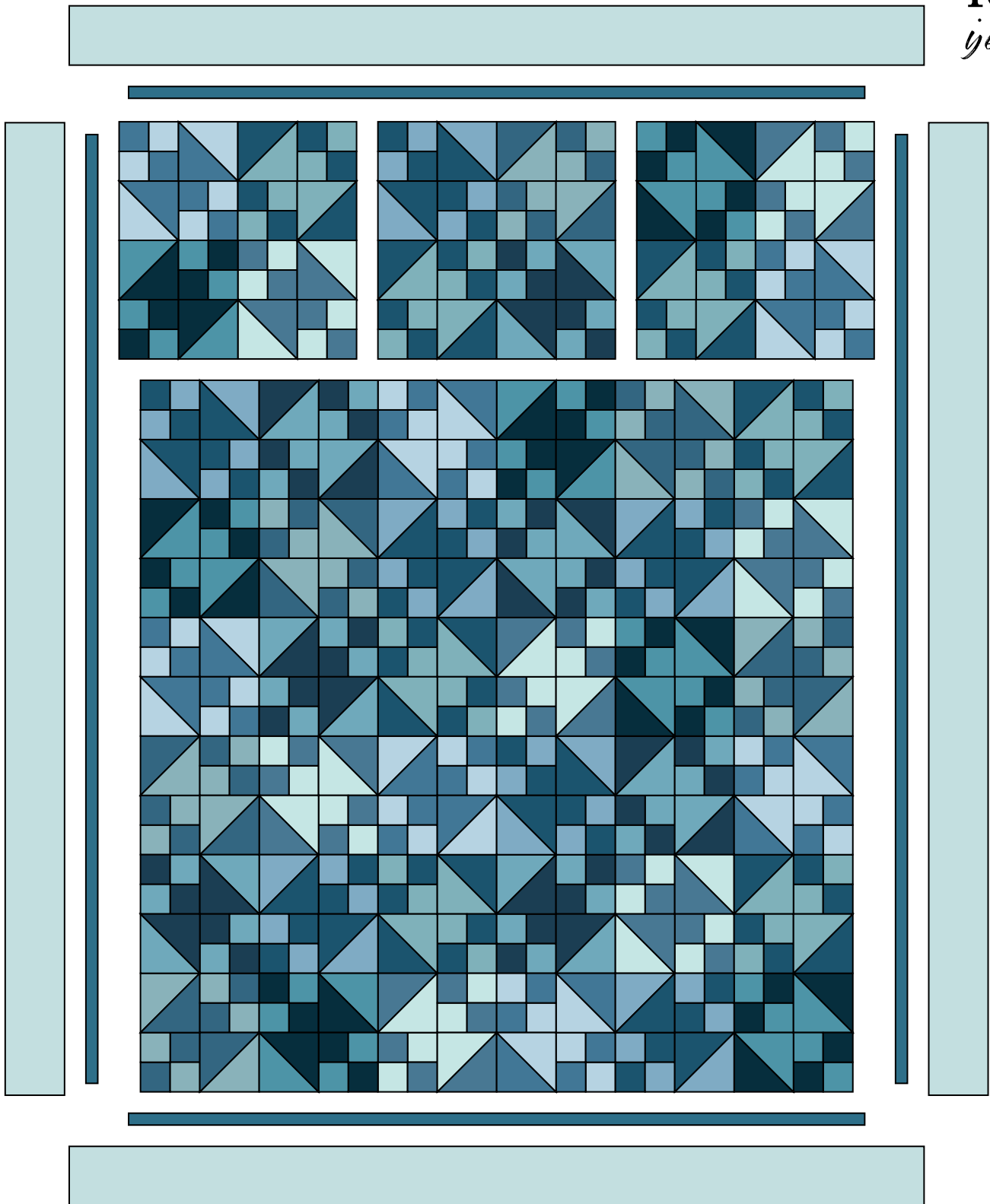
4. Sew long Fabric B borders to the sides. Sew short Fabric B borders to the top and bottom. Repeat this step with Fabric A borders.

Finishing the Quilt

5. Layer the quilt with batting and backing and baste. Quilt in the ditch around borders and block patches. Quilt the outer border as you wish. Or, quilt an overall pattern. Bind to finish the quilt.



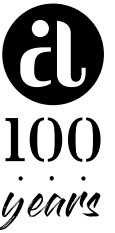
Big Block – Make 12



Quilt Diagram

Fountain Blue

ANDOVER FABRICS



307-B



308-B



309-B



310-B



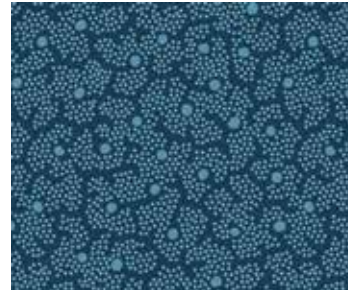
311-B



312-B



313-B



314-B



315-B



316-B



317-B



318-B



319-B



320-B



321-B



322-B

All fabrics are used in quilt pattern. Fabrics shown are 100% of actual size.

andover : makower uk

Free Pattern Download Available

1384 Broadway New York, NY 10018
Tel. (800) 223-5678 • andoverfabrics.com